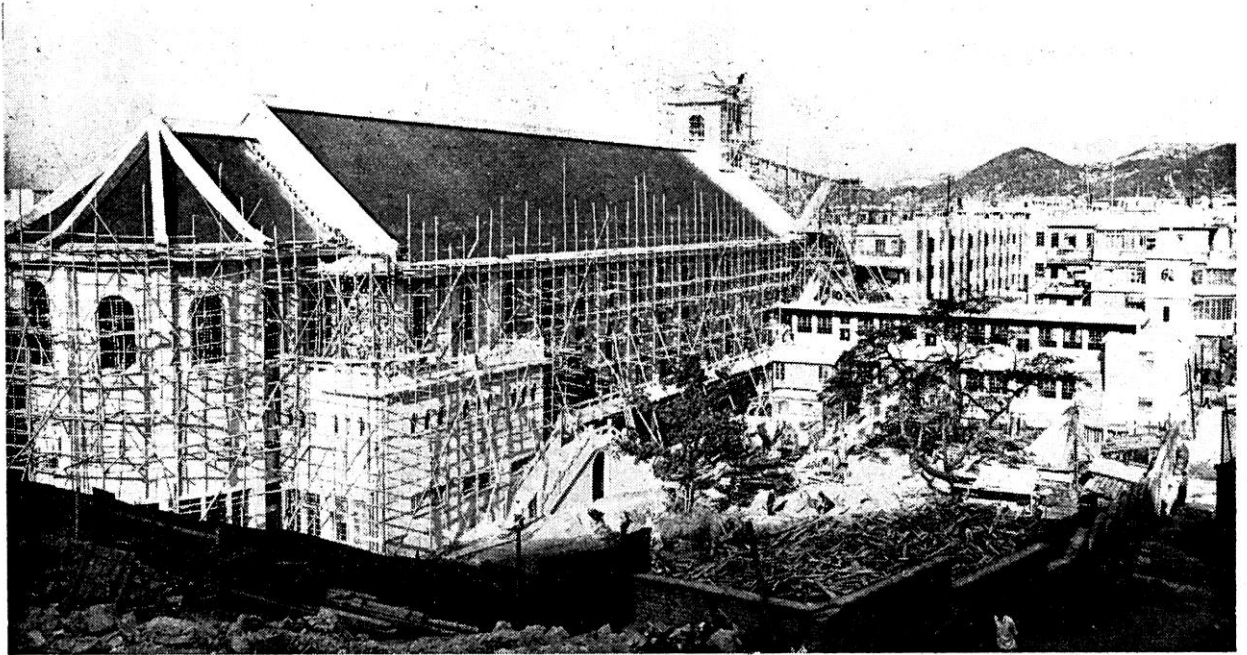


KOWLOON'S NEW CHURCH

Saint Francis of Assisi Construction Completed



CONSTRUCTION work on the new church of St. Francis of Assisi has practically been completed. The interior work is well advanced and it is hoped that the church will be ready for service by Christmas. With a seating capacity of nearly 1,500, St. Francis of Assisi will be one of the largest churches in Hong Kong.

Attached to the church is St. Francis Primary School with twelve classrooms. The school has been in operation since the beginning of the new school term. In two sessions and a night school it gives almost 1500 new school desks to the Shamshuipo area.

The new church is situated on the first floor whilst on the ground floor there is a large school auditorium and covered playground. The church has an over-all length of 112 feet and a width of 38 feet. Stained glass windows for the sanctuary, picturing the life of St. Francis, have been ordered from Italy and are expected to arrive in December.

Both the exterior and interior of the new building, which have been constructed in the traditional Chinese style, are most pleasing. Two wide staircases give ample access to the church and there are also side entrances from the school play ground.

The need for a new church in the Shamshuipo District has been apparent for many years. Mass is at present being said in the chapel of the Precious Blood Convent. The parish has nearly four thousand Catholics and a great number of Catechumens

under instruction. Parish priest is Father Horace De Angelis, P.I.M.E. He is appealing for donations to furnish the church. Each pew will cost \$200.00 and Father de Angelis hopes that parishioners and friends of St. Francis will contribute so as to have sufficient pews at the opening of the new church.

It is with funds collected at the monthly "Envelope Collection" and such donations as have been contributed to the "St. Francis Purse" established by His Lordship Bishop Lawrence Bianchi, that the cost of the building is to be covered.